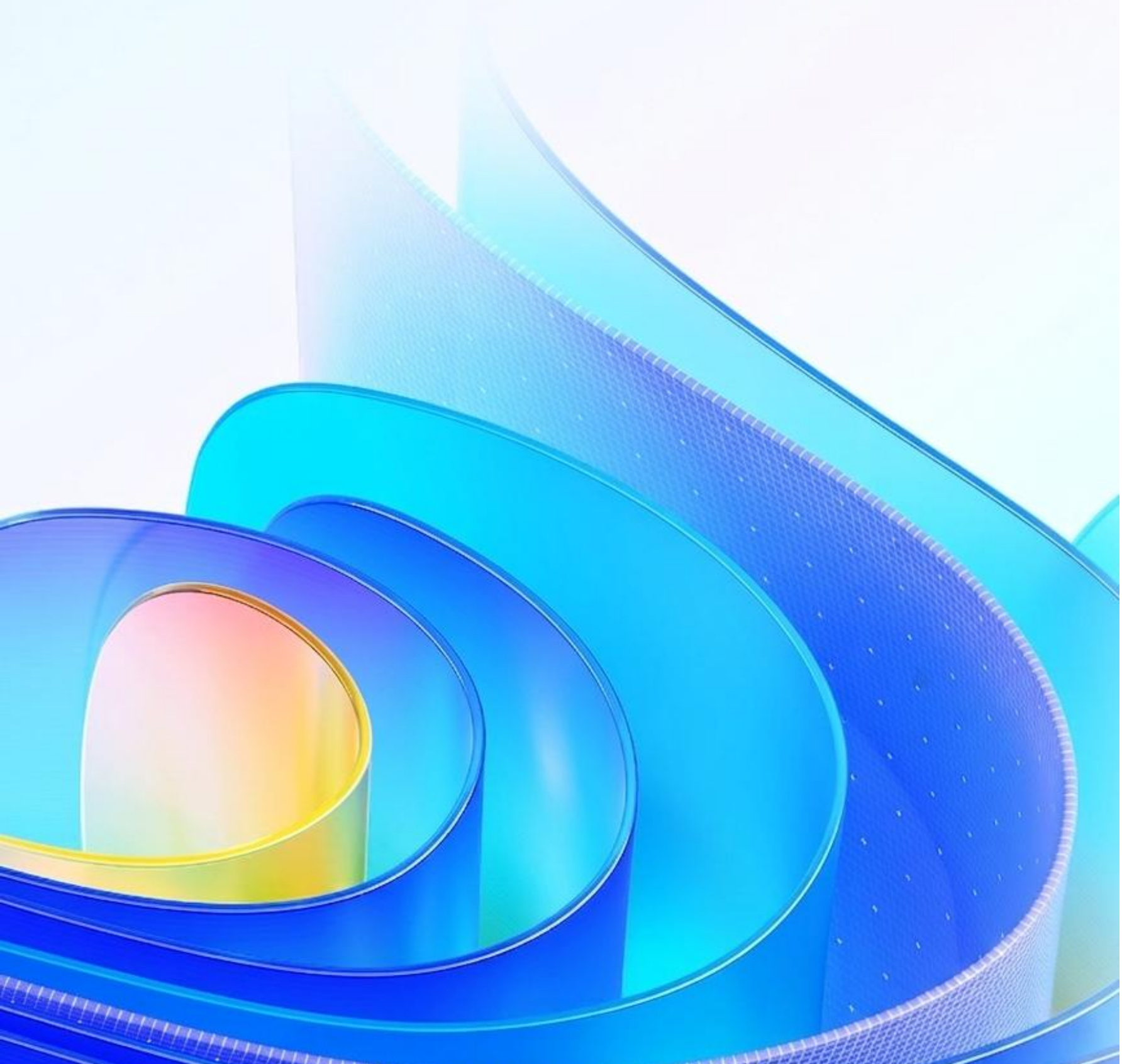




Complete Features Guide

GstarCAD 2027



GstarCAD 2027 Content

1.	Performance Leap <i>Improved</i>	3
2.	Dynamic Block Parametric Constraints <i>New</i>	4
3.	Centerline & Center Marks <i>New</i>	4
4.	Batch Plotting Upgrades <i>Improved</i>	5
5.	Cross-Application Copy & Paste <i>Improved</i>	6
6.	Floating Drawing Windows <i>Improved</i>	7
7.	Reconstructed Command Line <i>Improved</i>	8
8.	Hatch: "Use Current Drawing" for Boundary Sets <i>Improved</i>	9
9.	Full-Screen Mode Exit Prompt <i>Improved</i>	10
10.	Redesigned Plot Preview <i>Improved</i>	11
11.	Superior Display Optimization <i>Improved</i>	12



GstarCAD 2027 Complete Features Guide

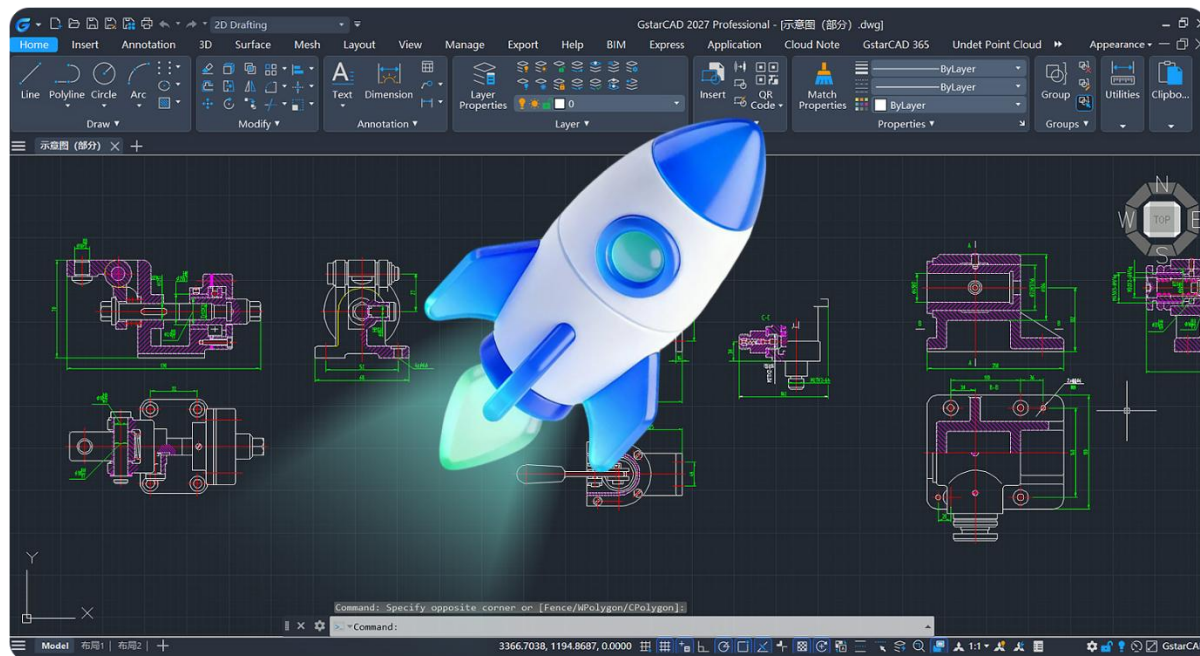
Faster by Core, Smarter by AI, Powered by Innovation

GstarCAD is a world-leading 2D CAD platform built on independent core technologies. With nearly 30 years of continuous R&D and innovation, its performance and stability have set new industry benchmarks.

GstarCAD 2027 focuses on elevating user experience by significantly optimizing performance for complex 3D drawings, including routine operations like move, mirror, rotate, and copy. New features such as Dynamic Block Parametric Constraints and Auto Input Method Switching minimize repetitive tasks, unlocking greater design potential. With a reconstructed command line, improved batch plotting, and optimized hatch functions, GstarCAD 2027 empowers designers to move beyond tedious low-level tasks and focus on **creative engineering expression**.

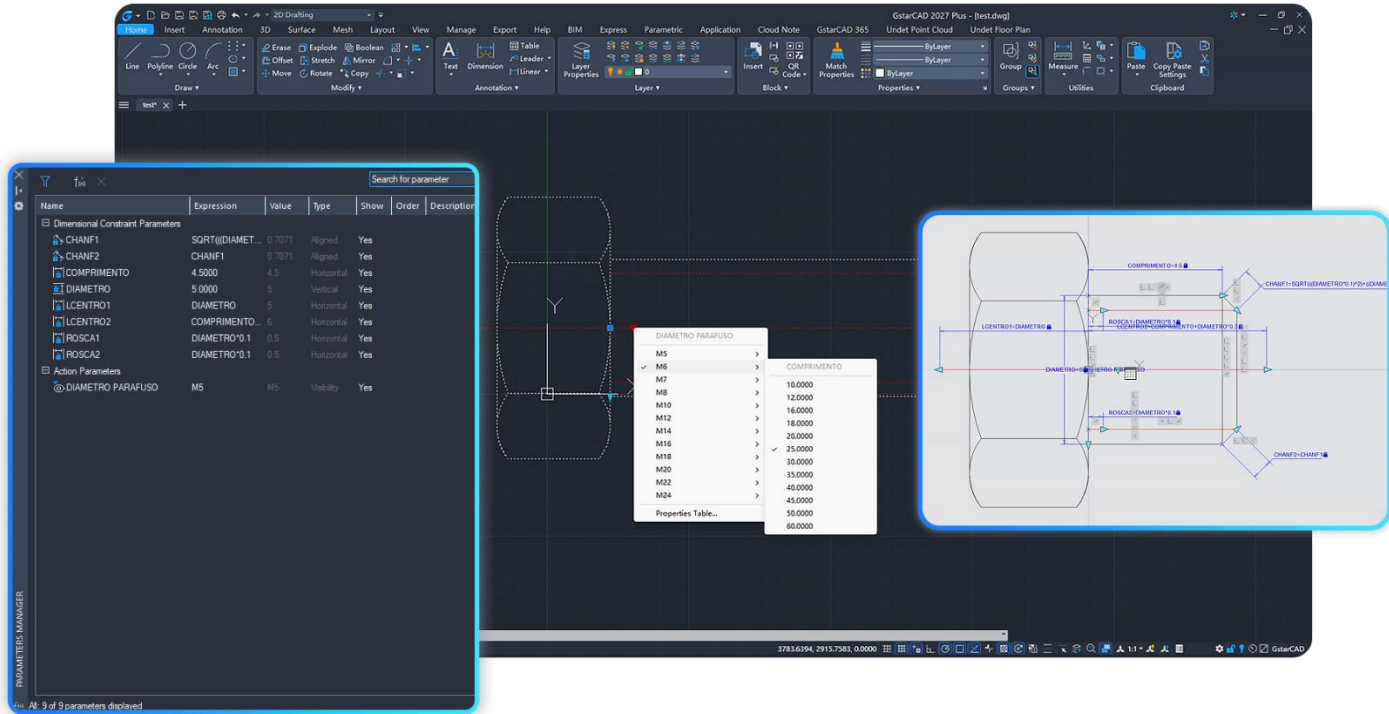
1. Performance Leap *Improved*

Powered by an all-new memory pool and optimized management mechanisms, GstarCAD 2027 delivers a significant performance boost. Common operations—such as Regen, Zoom/Pan, Select, Move, Mirror, Rotate, Copy, Undo/Redo, Explode, and Delete—are 10% faster on complex drawings. Closing drawings is now over 8 times faster.



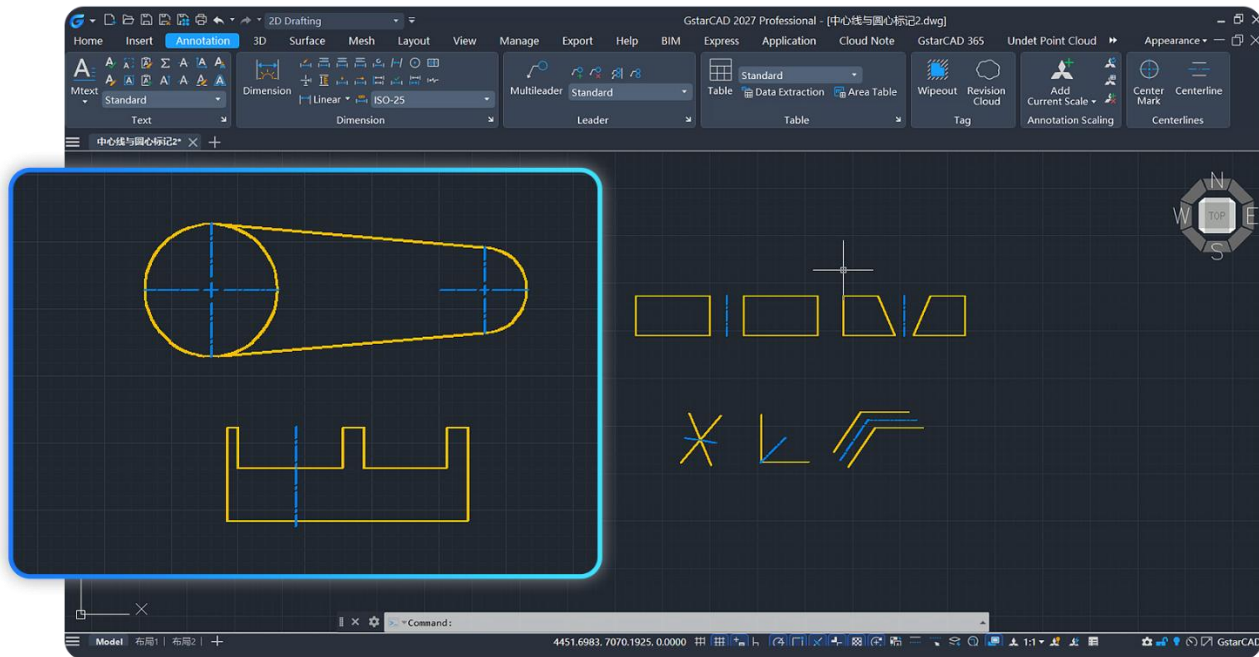
2. Dynamic Block Parametric Constraints *New*

Achieving a breakthrough in parametric and dimension-driven technology, this new feature enables precise linkage between geometry size and position. It significantly enhances design efficiency and accuracy, supporting enterprise-standard drafting and rapid iterations.



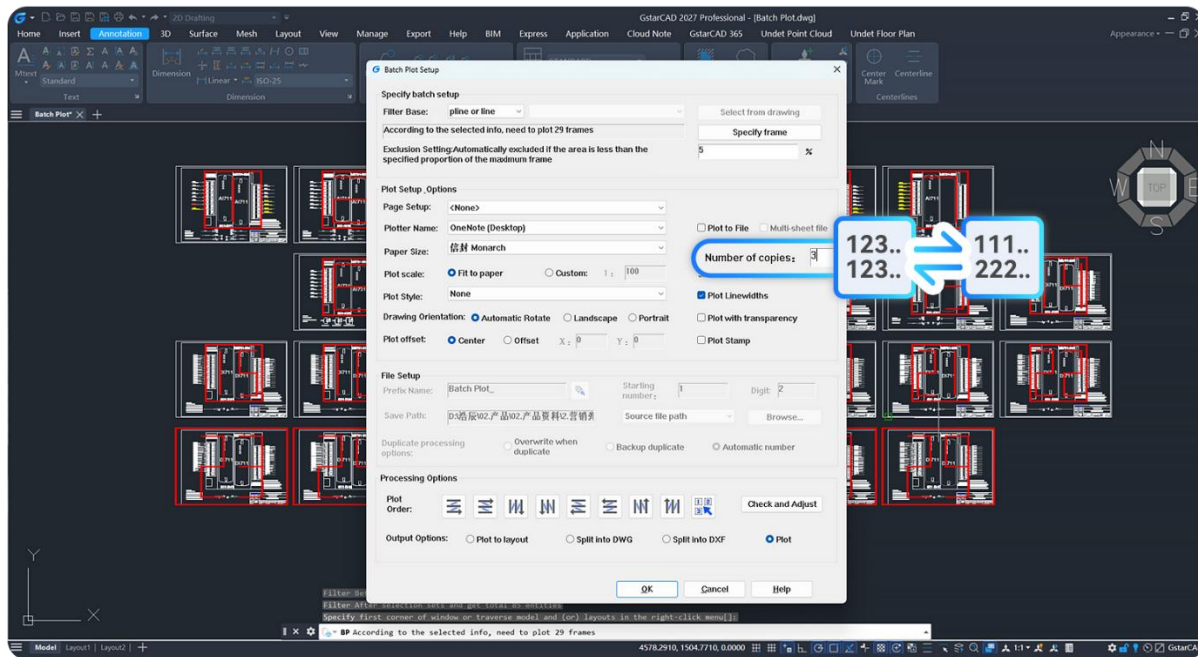
3. Centerline & Center Marks *New*

Easily define geometric features by creating centerlines between selected lines/polylines or placing center marks at the centers of circles, arcs, or polygons. These are essential for clear engineering communication.



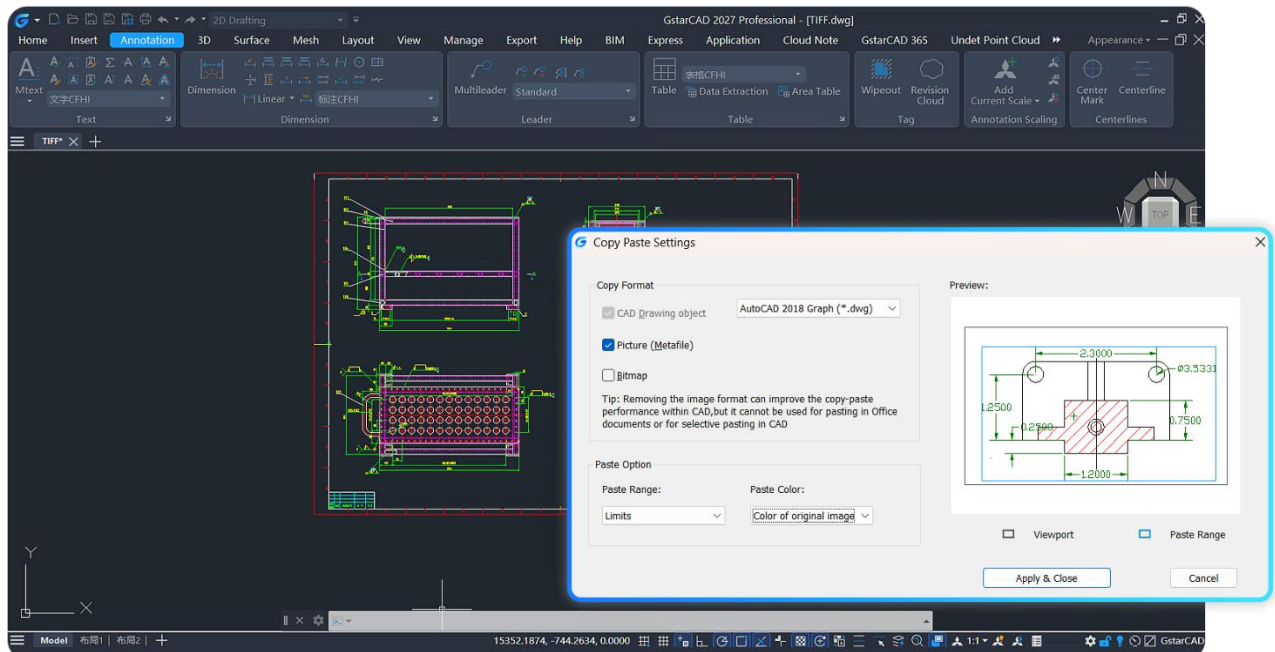
4. Batch Plotting Upgrades *Improved*

The Batch Plotting tool now supports custom print sequences. Users can choose to print "by page" or "by set" when handling multiple documents, making large-scale printing more flexible and worry-free.



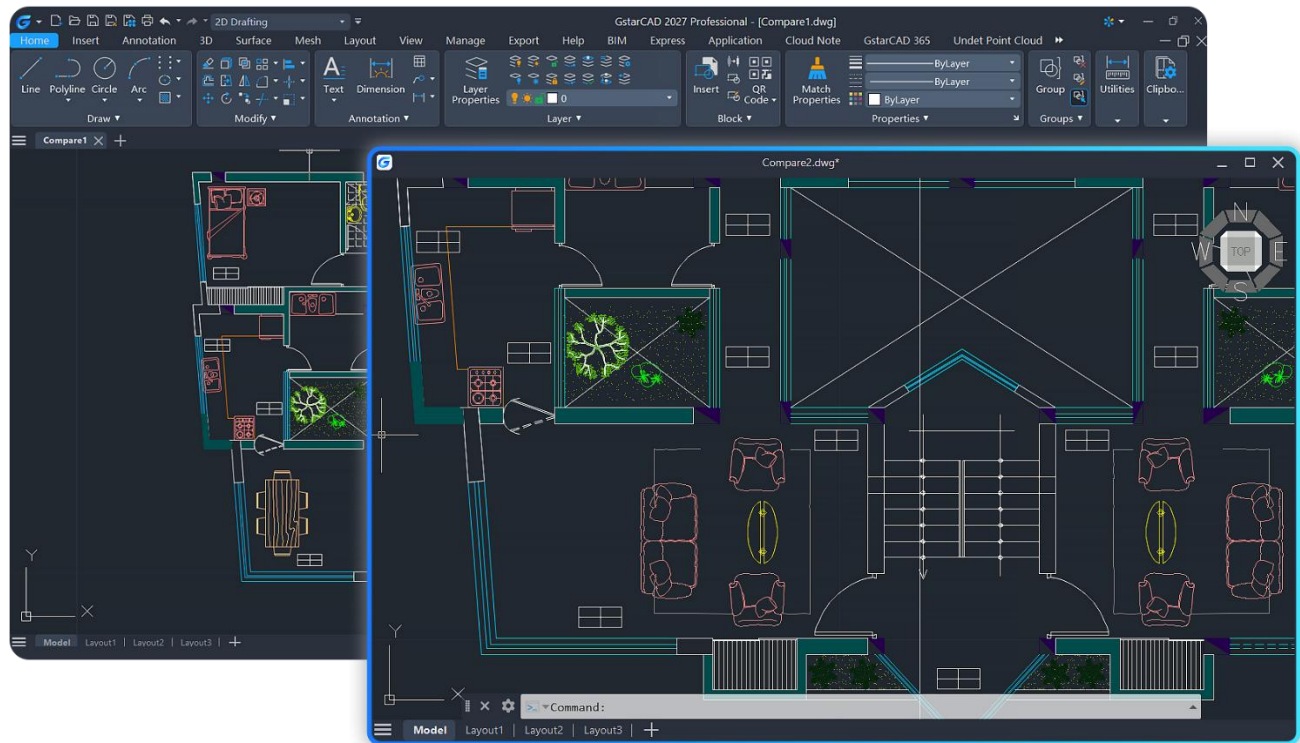
5. Cross-Application Copy & Paste *Improved*

Enhanced DWG data exchange allows users to adjust object formats, paste range, and colors flexibly when copying between different CAD applications, ensuring high-quality design consistency.



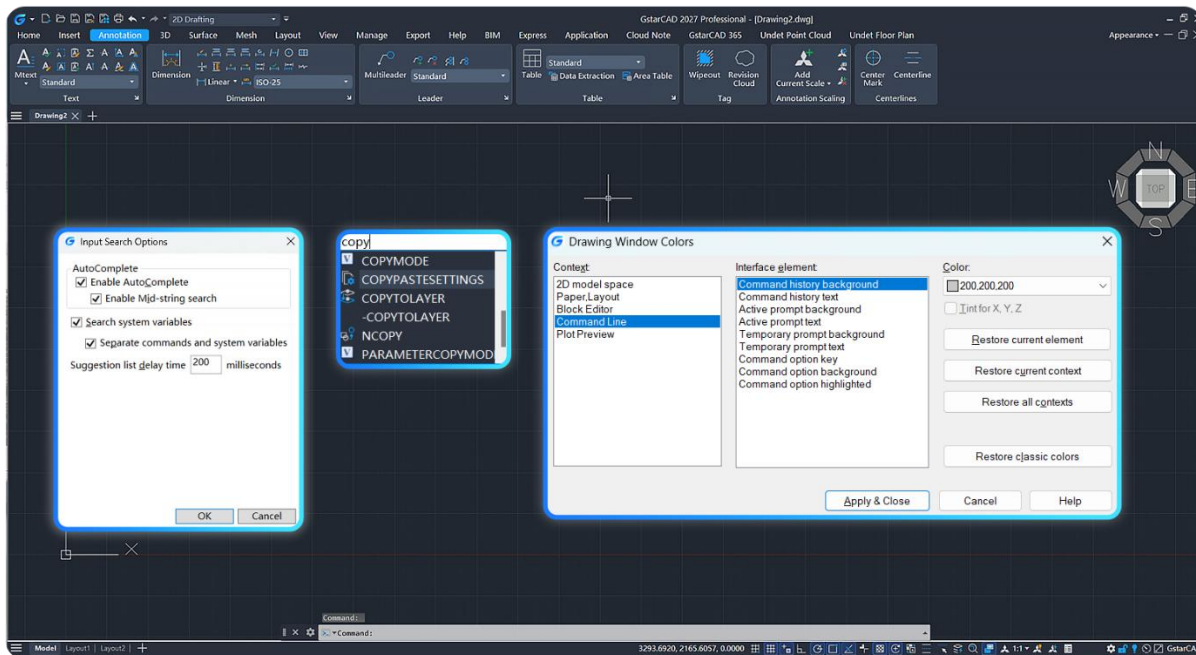
6. Floating Drawing Windows *Improved*

GstarCAD 2027 now supports multiple top-level windows. You can drag a drawing tab out of the main window to create a floating window, enabling side-by-side comparisons and easy data transfer without tab switching.



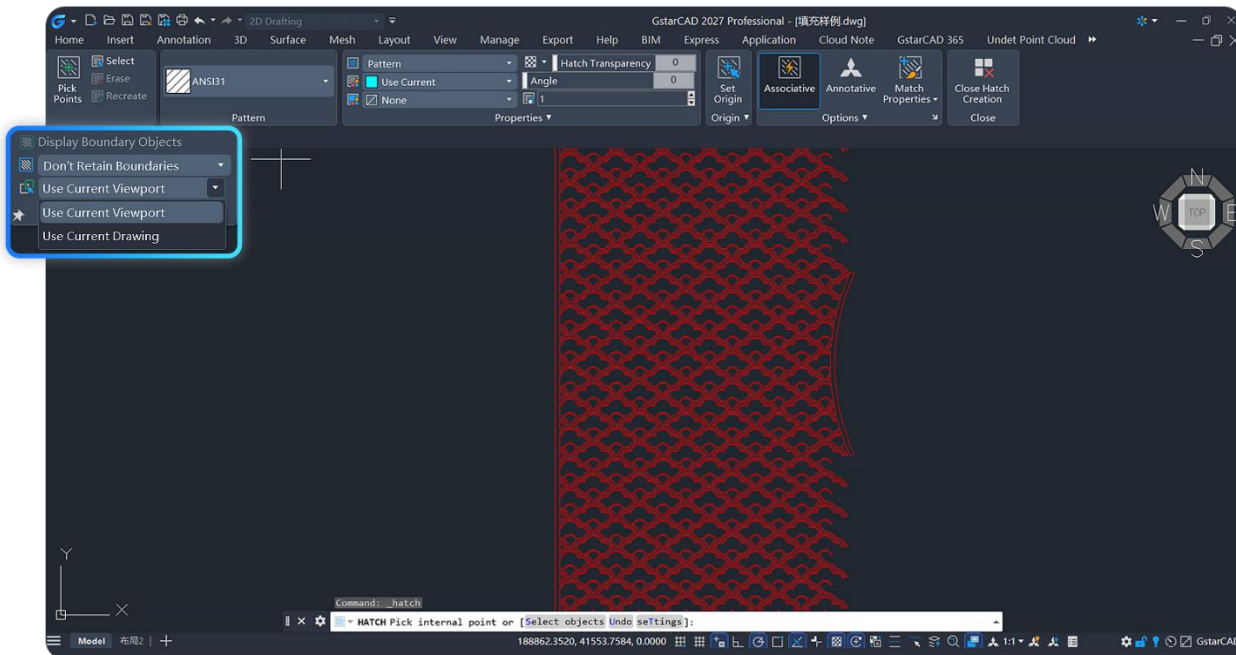
7. Reconstructed Command Line *Improved*

The upgraded command line features a resizable window (width and height) and supports selecting command options via mouse clicks or hotkeys. It also displays temporary prompts above the command line for a more intuitive experience.



8. Hatch: "Use Current Drawing" for Boundary Sets *Improved*

The Hatch function now includes a "Use Current Drawing" option, extending the boundary search beyond the current viewport. This effectively handles hatch operations for unclosed boundaries within the entire drawing.



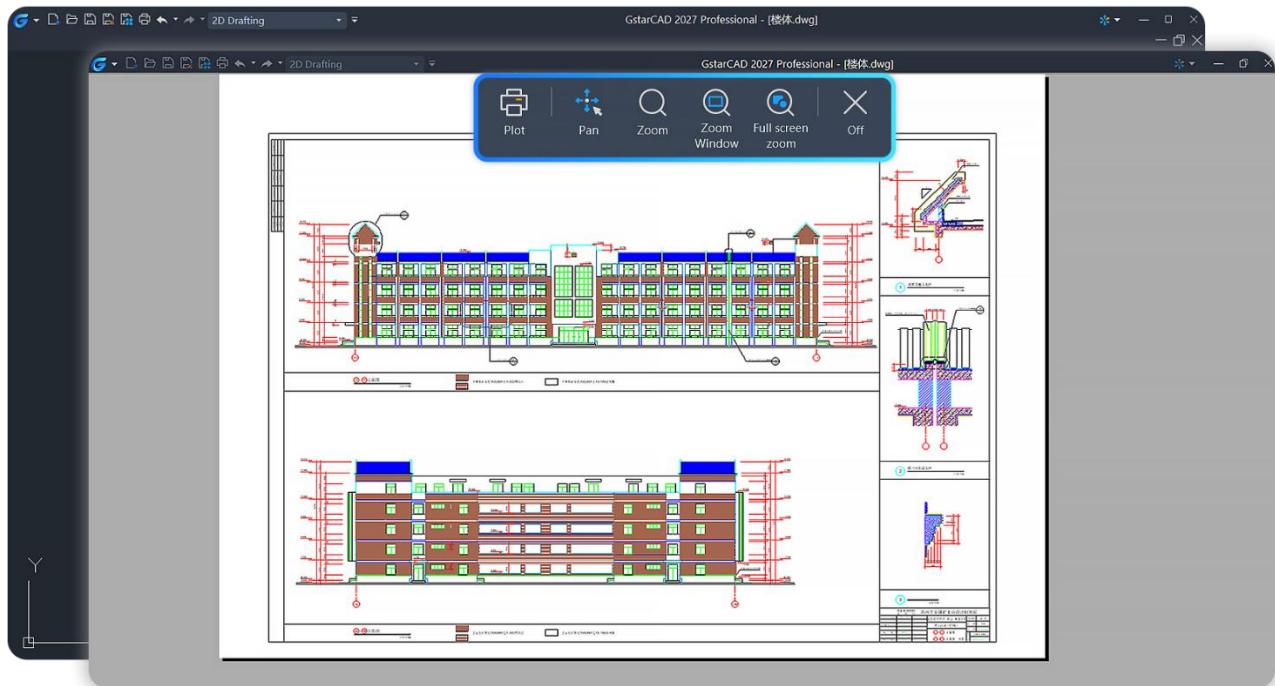
9. Full-Screen Mode Exit Prompt *Improved*

To prevent accidental disruptions, a clear "Exit Full Screen" prompt now appears at the top of the interface when full-screen mode is activated (manually or by mistake), helping users quickly return to their standard workflow.



10.Redesigned Plot Preview *Improved*

The Plot Preview module has undergone an architectural optimization. The traditional toolbar is replaced by a modular, integrated functional panel that can be docked or floated, drastically shortening operation paths and reducing errors.



11. Superior Display Optimization *Improved*

By maximizing GPU utilization and hardware acceleration, GstarCAD 2027 offers smoother interactions for opening/saving, layer operations, and block edits. Average performance has increased by 30%-80%, with some complex drawing operations accelerating by over 90%, providing a more refined and fluid visual experience.

